



Netarus

Netarus, LLC
111 Granby Street
Norfolk, VA 23510 USA

+1 (757) 819-4600
www.hoistcam.com
sales@hoistcam.com



Improve Safety Increase Productivity

Construction | Industrial | Marine | Transportation

Increase Safety & Productivity Over 50%!* HoistCam™



HoistCam™ Benefits

HoistCam™ is a rugged wireless crane camera system that significantly improves productivity on the job site. HoistCam magnetic mounting system attaches to the hook block in minutes with battery run-time of 8 to 24 hours and transmits a clear video to the operator's cab.

Operator

- ✓ Eliminate blind and distant lifts
- ✓ Verify area clear of obstructions and personnel
- ✓ Verify load properly attached to the hook block

Rigger

- ✓ Improved communication with the crane operator and rigger
- ✓ Increase accuracy of load placements
- ✓ Increase speed of lift

Management

- ✓ Increased productivity on the job site
- ✓ Improve communication between operator and subcontractors
- ✓ Prevent safety related stoppages
- ✓ Remotely monitor the job site with an aerial view



*HoistCam HC160 (Internal Battery)
HoistCam HC163 (External Battery)*



*HoistCam HC180 (Internal Battery)
HoistCam HC183 (External Battery)*



*HoistCam Repeater
(Telescopic Booms Only)*



*HoistCam HC120 Series
Boom Tip Camera*

Backup & Winch Cam

- View the site, winch or the back of the crane
- 12VDC / 24VDC wired and wireless options
- Split screen display for use with HoistCam

Centralized Monitoring

- HoistCam™ Director – Monitor from Anywhere.
- GPS tracking, recording and real-time playback
- Connect via wireless network or cellular

Power Options

- Internal battery: 8 to 10 hours per charge
- External battery: 8 to 24+ hours per charge
- HC170 Ignition Protection Rated (SAE J1171) Model

Transport & Storage

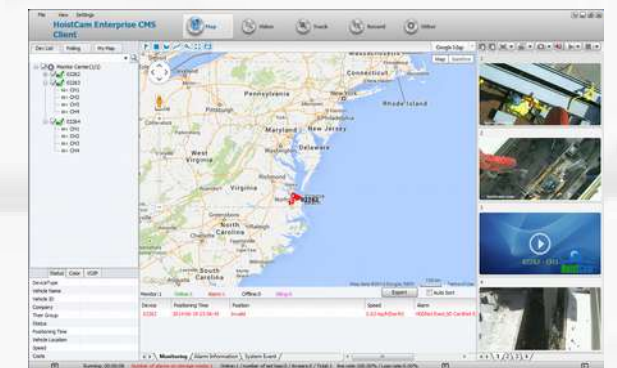
- Rugged storage and transport case
- Quickly setup and breakdown at each site
- Can be shipped via major shipping carriers

Customization

- Construction, Industrial, Transportation, Marine
- Multiple types of configurations
- Customized solutions to meet specialized requirements
- Complete system integration and on-site evaluation by a HoistCam Sales Professional



*Split Screen Monitor
HoistCam and Winch Camera*



*HoistCam Director Remote Software
View Live and Recorded HoistCam*



HoistCam Transport Case

High-Strength
Magnetic Mounting System
No Welding/Bolts Required

* - Results may vary. Case study of crane operator using HoistCam in blind-lift available at <http://www.hoistcam.com/proof>.

** - Time required to attached the camera to a clean surface, secure with safety lanyard and power on the camera. Assumes that receiver and display have been installed.

Netarus, LLC is constantly developing product improvements.
Netarus reserves the right to modify product design and specifications without notice and without incurring any obligation.
Apple, Blackberry and Android logos are trademark of Apple, Research In Motion and Google, respectively. All other logos are trademark their respective owners.